

LED Sleek Under Cabinet Light

CPUNSLK-6-8WCT-12-16WH

Important Safety information:

Please read these instructions carefully before attempting to install this product. It is advisable to keep these instructions in a safe place for further reference.

WARNING: These products may represent a possible shock or fire hazard if improperly installed or attached in any way. Products should be installed in accordance with these instructions, current electrical codes and/or the current National Electric Code (NEC). This unit must be grounded

To avoid electrical shock, disconnect or disable power at the source prior to installation or maintenance. Always consult a qualified electrician

Safety Instructions:

1. The LED sleek light is listed c/ETL/us and intended for indoor use in dry locations only. Do not use in the vicinity of standing water or liquids. Do not submerge in water or liquids.
2. Do not use if there is any damage to the unit or to the power cord's insulation. Inspect periodically.
3. Do not route cords or units through walls, doors, windows or any similar part of a building structure.
4. Do not secure unit or its power cord with staples, nails, or any other sharp objects that may damage the cords.
5. Please read and understand these instructions before beginning installation.

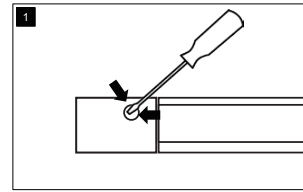
Maintenance & Care:

1. Ensure that the power is disconnected prior to cleaning.
2. To keep the finish of this product, wipe over with soft cloth periodically
3. Do not use harsh chemical solvents, it may dis-colour or damage the finish.

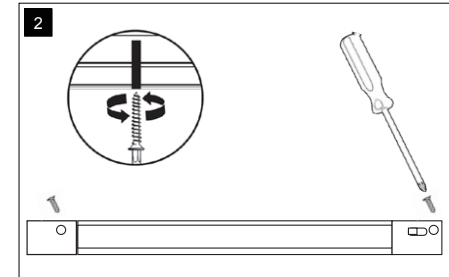
Preparation for Installation:

1. Disconnect electrical power before installing or servicing any part of this fixture.
2. Place fixture on a clean flat surface.

Installation Instructions:

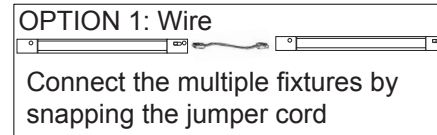


Using a flathead screwdriver (not included) pry off the plastic cap that covers the screw hole on the fixture then draw holes with a pen

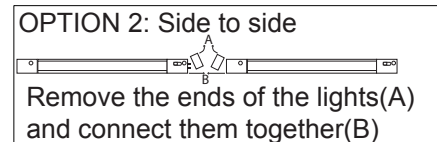


Place the fixture in the desired position and drive fixture mounting screws securely. Complete the mounting by putting back the plastic cap on the hole.

Linkable instruction:



Connect the multiple fixtures by snapping the jumper cord



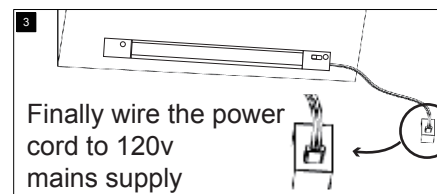
Remove the ends of the lights(A) and connect them together(B)

WARNING: Make sure the POWER is OFF before connecting any additional fixtures.

WARNING: In multiple fixture installations DO NOT electrify fixture group until all electrical connections have been securely mounted.

WARNING: DO NOT use jumper cord as a means to turn fixtures on and off.

Final installation on the cabinet



Finally wire the power cord to 120v mains supply

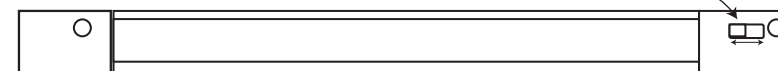
WARNING: DO NOT plug the power cord into the power supply before finishing the installation. Attach the power cord to the "INPUT" receptacle on one end of the fixture. The 2 receptacles are designed to only accept a specific plug.

NOTE: Connect cord to fixture by snapping the quick connect end of the cord to the corresponding connector in the end of the fixture marked "IN". The cord will only connect to the "IN" connector so make sure the right connector is identified. Do not force the connection, it should snap in easily

CHOOSE YOUR OWN COLOR:

WARM WHITE 2700K
SOFT WHITE 3300K
COOL WHITE 4000K

slide the switch from open to close to open you will see the color change



QUESTIONS?
E: info@nadair.com
Tél: 1 (800) 776-7891
www.nadair.com



NADAIR
since 1980

IS-CPUNSLK-6-8WCT-12-16WH